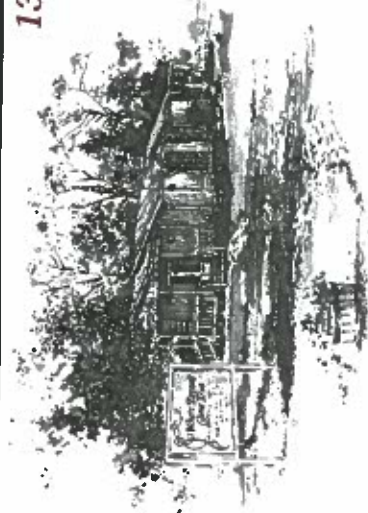


11

### THE MERCANTILE

Memories Sold Here  
Two Full Floors  
Something for Everyone!  
Open Tuesday - Saturday  
Winter Hrs. Jan. - Mar.  
**(502) 395-0032**

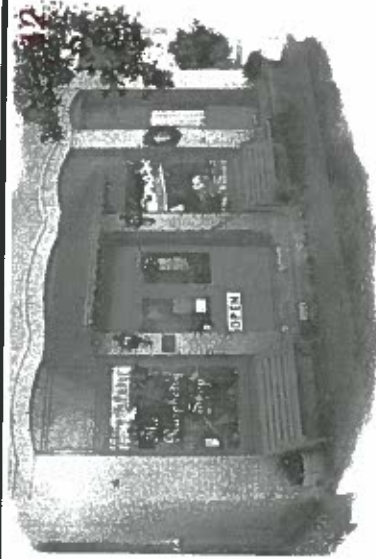


13

### WHERE DREAMS COME TRUE

122 S. Bell Avenue  
One block off Main Street, look for the yellow building with the green roof.  
Fine Art • Distinctive Crafts • Quality Gifts  
Handcrafted Jewelry • Pet Section & Pet Portraits  
Books • Original Florals • Handmade Candles  
Open 11 a.m. - Closing hours vary seasonally  
**(270) 369-0007**

**SWEET DREAMS OLD FASHIONED  
ICE CREAM PARLOR & SWEET SHOP**  
*Award winning hand dipped ice cream,  
seasonal beverages, and Amish food items.*



### THE RASPBERRY SHOP

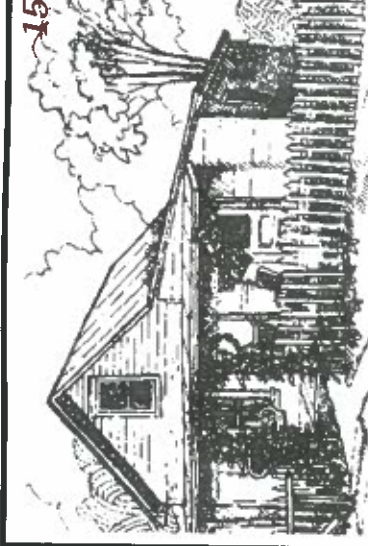
211 E. Main Street  
"A cute little shop with a whole lot to offer!"  
Primitives • Home Decor  
Quilts & Throws  
Specialty Gift Items  
Decorative Signs  
Baby & Children's Gifts  
[www.theraspberryshop.com](http://www.theraspberryshop.com)  
**(270) 369-9872**



14

### THRU THE GRAPEVINE

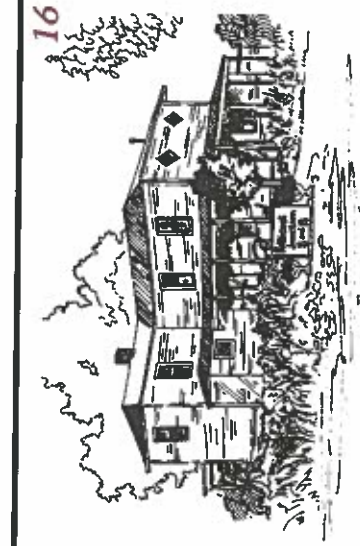
"Romancing Your Home"  
Olde Century Paints, Traditional Lighting, Pre  
de Provence Soaps, Florals, Gourmet Kitchen  
items, Vera Bradley, Crabtree & Evelyn,  
Camille Beckman Skin Care and More.  
TUES. - SAT. 11 AM - 9 PM  
Winter Hrs. Jan.-Mar. open at 11:00 a.m.  
200 S. Bell Ave. **(270) 369-7925**



15

### SHABBY CHIC SHERRY

**A Shop Out Of The Ordinary!**  
Hand-made items by local artists  
Vintage Jewelry • Botique  
Primitives • Estate items  
Open Tues. - Sat  
Winter hrs. - Jan. - Mar.  
**(502) 395-0032**



16

### PETTICOAT JUNCTION

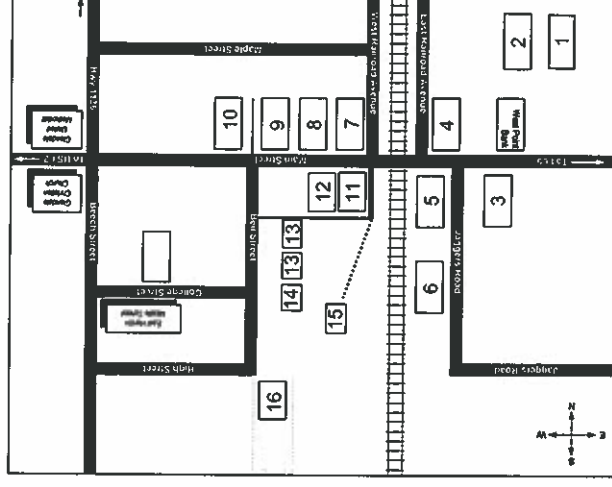
**BED AND BREAKFAST**  
Owner - Jack & Rachel Holman  
Gift Certificates Available  
**(270) 369-8604**  
**Toll Free (877) 738-2628**

Please visit The Sisters Shop  
located in the courtyard of  
Petticoat Junction Bed and Breakfast

## GLENDALE SPECIAL EVENTS

- Spring Fest  
3rd Saturday in May - May 15, 2010  
Crafts Booths, Car Display, Music & Food
- Glendale Lions Club Barbeque  
3rd Saturday in June - June 19, 2010  
City-wide Yard Sale
- 3rd Saturday in June - June 19, 2010  
Glendale Crossing Festival
- 3rd Saturday in Oct. - Oct. 16, 2010  
600 Craft, Antique & Food Booths
- Glendale's Christmas In The Country  
Each Saturday in December  
1st Saturday Merchant's Open House  
2nd Saturday Music, & Santa  
2nd Sunday Home Tours

For more information contact:  
**Glendale Merchants**  
P.O. Box 131 • Glendale, KY 42740  
270-369-6188  
[www.HistoricGlendale.com](http://www.HistoricGlendale.com)  
Take Exit 86 off I-65



**Kentucky**  
UNBRIDLED SPIRIT

Printed in cooperation with  
Kentucky Department of Travel.

# ANTIQUES CRAFTS AND GIFTS

IN HISTORIC  
**GLENDALE**  
KENTUCKY



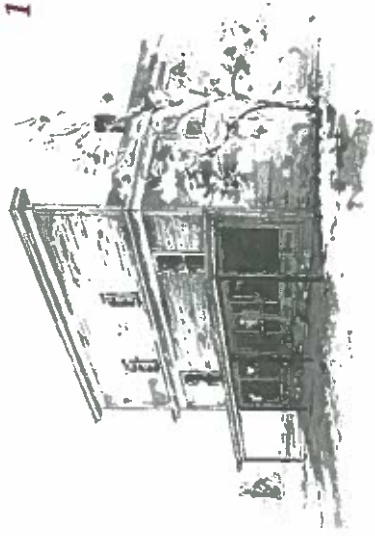
Nestled by the tracks is one of the most  
unique communities in the heartland of  
Kentucky. Time seems to slow down a bit  
where history, antiques, country crafts  
and fine dining are all within an easy  
stroll or perhaps a carriage ride.

Stay an hour or stay the weekend  
"YOU'LL BE GLAD YOU CAME."

[www.HistoricGlendale.com](http://www.HistoricGlendale.com)

Take Exit 86 Off I-65  
2 miles West on Hwy. 222

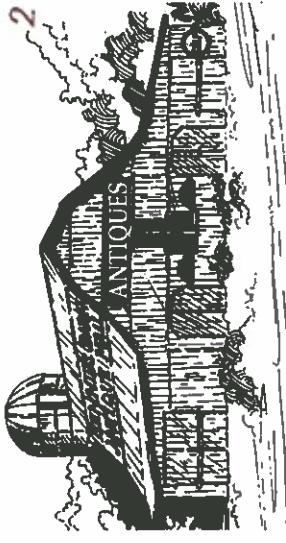




### 1 **TRUE KENTUCKY**

"Fine Creations from the Bluegrass State"  
• Kentucky Art and Crafts • Books • Music •  
• Gourmet Foods • Antiques •  
452 East Main Street  
[www.TrueKentucky.com](http://www.TrueKentucky.com)

**(270) 369-7850**



### 2 **BENNIE'S BARN ANTIQUE MALL**

Look for the big red barn behind West Point Bank.  
3 floors of antiques, primitives,  
collectibles and good glassware.

We buy antiques and estates.  
Open 7 days a week.  
[www.benniesbarn.com](http://www.benniesbarn.com)

**(270) 369-9677**

Outdoor booth space available for  
Glendale Crossing Festival -  
third Saturday in October  
Contact 270-369-9677



### 3 **GREEN TOP ANTIQUES & COLLECTIBLES**

Featuring the areas finest primitives,  
antiques, & collectibles in 66+ booths  
& 35 showcases

[www.historicglendale.com/greentopantiques.htm](http://www.historicglendale.com/greentopantiques.htm)

Tues. - Thur. 10:00 a.m. - 6:00 p.m.

Fri. & Sat. 10:00 a.m. - 7:00 p.m.

Sun. 12:00 p.m. - 5:00 p.m.

**(270) 369-7943**



### 4 **GLENDALE ANTIQUE MALL**

30 Dealers

Antiques, Collectibles, Crafts,  
Glassware, Derby Items and more

Sun. 1-6, Mon. 11-6, Tues. thru Sat. 11-9

**(270) 369-7279**

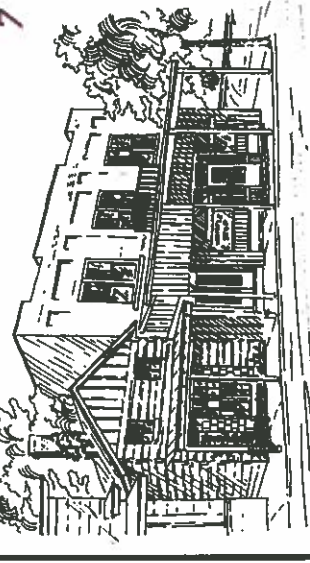


### 5 **TONY YORK'S ON MAIN**

Lunch and Dinner  
Sunday Brunch  
Dark on Tuesday  
"Fine Dining"

For Reservations call

**(270) 369-6000**



### 7 **THE WHISTLE STOP RESTAURANT AND GIFT SHOP**

"Southern Cooking At it's Finest  
In a Unique Dining Atmosphere"

Let Us Cater Your Special Occasions  
**FAMILY OWNED AND OPERATED SINCE 1975**  
TUE. - SAT. 11 AM - 9 PM  
[www.whistlestoprestaurant.net](http://www.whistlestoprestaurant.net)

**(270) 369-8586**



### 9 **SEASONS OF ELEGANCE**

"To Everything There Is A Season"  
Glendale's Specialty Boutique  
A Must See

Open Tue. - Thur. 11 AM - 6 PM

Fri. - Sat. 11 AM - 9 PM

**(270) 369-8846**

Owner: Ellie Latimer



### 6 **SERENDIPITY SHOPPE**

A LOG CABIN FILLED WITH UNIQUE  
Primitives - Antiques  
Cottage Items - Home Decor

Tues. thru Thur. 11:00 a.m. to 6:00 p.m.

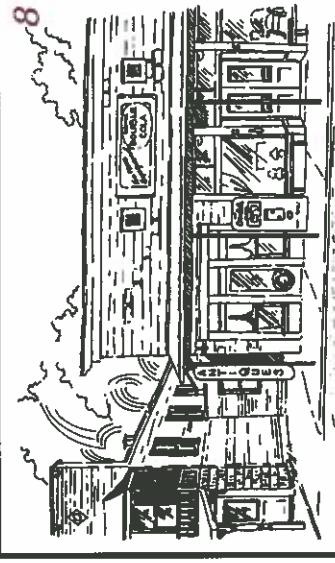
Fri. & Sat. 11:00 a.m. to 8:00 p.m.

Sun. 12 Noon to 5:00 p.m.

103 Jagers Rd.

**(270) 369-0560**

[www.serendipityshoppe.org](http://www.serendipityshoppe.org)



### 8 **THE SIDE TRACK SHOPS ANTIQUE MALL**

"Glendale's Oldest Antique Mall"  
212 East Main Street

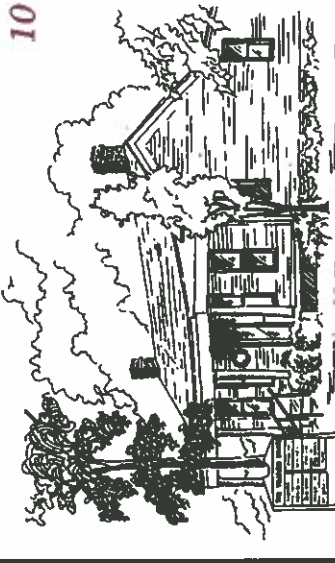
"20 Different Shops Under 1 Roof"  
Antiques, Collectibles, Gifts, Crafts,  
Blue Ridge Pottery, and Garden Decor

Also Specializing in Antique Kerosene Lamps & Parts

Open Tue. - Thur. 11 AM - 5 PM

Fri. 11 AM - 6 PM • Sat. 11 AM - 7 PM

**(270) 369-8766**



### 10 **THE VILLAGE SHOPPE**

150 East Main Street

Yankee & Woodwick Candles • Heritage Lace  
Quilts • American-made Glass Lamps  
San Francisco Music Boxes • Lee Middleton Dolls  
Caren-et-Cie (Skin Care) • Furniture • More

**(270) 369-8818**

TUES. - SAT. 11 A.M. - 9 P.M.

Winter Hours: Open at 11:00 a.m. Jan. - Mar.

Owner Millie Rhodes-Baker